

<b>Combined Counties League Premier Division</b> <b>Tuesday 24 September 2013 - Kick-off 7.45pm.</b>			
<b>Epsom &amp; Ewell</b> (Royal blue and white shirts, Blue shorts)		<b>v.</b>	<b>Wembley</b> (Red shirts, Red shorts)
1	Keiron CAMPBELL	1	Bart FOGLER
2	Sam CURRIE	2	Toby WEBB
3	Jamie HATFIELD (Capt)	3	Jack NICHOLAS
4	James TAYLOR	4	Richard BROWN
5	George MURPHY	5	Wayne WALTERS
6	Carl DOWNS	6	Attila FEKETE
7	Ben HAYWARD	7	Ian BATES (Capt)
8	Karl DOUGHLIN	8	Alex MOKENI-KANE
9	Mark JARMAN	9	Tatsua FUJIOKA
10	Kyle HOUGH	10	Yassine FEHMI-GIL
11	Nathan AYLING	11	Adrian DINHAM
12	Matt SMITH	12	Chris KORTEN
14	Anthony PANAYI	14	Kristian HALE
15	Alex McKAY	15	Krzysztof KUCHARCZYK
16	Jordeyne HENRY	16	Luke DAVIS
17	Alex MCGREGOR	17	Issah ABUBAKAR
18	Robbie BURNS	18	Conor CARROLL
<b>Manager:</b> Lyndon Buckwell <b>Assistants:</b> Glynn Mandeville and Tony Coombe <b>Player-Coach:</b> Russell Banyard <b>Physio:</b> Ken Jones		<b>Manager:</b> Ian Bates <b>Assistant Manager:</b> George Green <b>Assistant Manager:</b> <b>Coach:</b> Gary McCabe <b>Physio:</b>	

Referee: Nick Brown (Kingston-upon-Thames)

Assistants: Paul Maskell (Epsom), Peter Brooks (Forest Hill)

**If you want to sponsor the match or the ball, see a committee member**

**Next Home match**  
**Combined Counties League – Premier Division**  
**Epsom & Ewell v. Badshot Lea**  
**on Saturday 5 October 2013 at 3.00pm**



# Welcome to

## Epsom & Ewell

## v. Wembley

## Tuesday 24 September 2013

This evening we welcome Wembley FC to Chipstead, their Officials, supporters and tonight's match officials for this Combined Counties League match. We welcome you fresh from a busy weekend on and off the pitch for the club. On the pitch we are looking to bounce back from our FA Vase exit to Whyteleafe on Saturday. When the FA draws came out I was a bit nervous about drawing the same team in both competitions at the first hurdle. What if they're a good side, being the worry. Knowing the FA Cup draw for three rounds in advance gave false hope as easier games lay beyond Whyteleafe, as they probably will in the FA Vase.

Having said that we have twice been level on 90 minutes with them and they are a good side. For a long while due to Kieron Campbell's performance in goal it looked as if it might be our day and we'd hang on to our earlier lead. We were undoubtedly unlucky with a couple of penalty incidents one for not given and one against given, but we can't change that now.

The good thing is to be able to use the old cliché about concentrating on the league from top position so we have lots to look forward to yet in the season, hopefully starting tonight. It was also a busy weekend for the club off the field as we were represented at the Epsom and Ewell Borough Show running three pitches with our Charity Partners Mid Surrey Mencap offering fun family games and opportunities to promote the club and hopefully attract new Sponsorship. The Pitch Square grid scheme has been launched and will hopefully attract new sponsors from outside the club. If anyone knows of anyone or business who would like their name in a square for £10 a square please let any of the Committee members know. We will have a full report on how the day went in the next programme.

Enjoy the game,  
 Steve Dyke,  
 Epsom & Ewell Football Club Programme Team

**Cover photo of Kyle Hough who, if selected, will celebrate his 250<sup>th</sup> appearance for Epsom & Ewell tonight**

**All photos by Gemma Jarman**



## Cherry Red Records Combined Counties League Premier Division Table 2013-2014

Pos	Team	P	W	D	L	F	A	GD	Pts
1	Epsom & Ewell	9	8	0	1	17	4	+13	24
2	Hanworth Villa	9	6	2	1	26	13	+13	20
3	South Park	8	6	0	2	21	12	+9	18
4	Windsor	8	5	2	1	18	9	+9	17
5	Raynes Park Vale	8	5	1	2	15	14	+1	16
6	Frimley Green	8	4	2	2	19	18	+1	14
7	Hartley Wintney	6	4	1	1	15	10	+5	13
8	Westfield	7	4	0	3	11	10	+1	12
9	Badshot Lea	8	3	3	2	10	9	+1	12
10	Molesey	8	4	0	4	11	12	-1	12
11	Farnham Town	7	3	2	2	12	10	+2	11
12	Croydon	8	3	1	4	10	13	-3	10
13	Ash United	10	3	1	6	11	16	-5	10
14	Mole Valley SCR	9	3	1	5	14	21	-7	10
15	Bedfont Sports	9	2	2	5	6	11	-5	8
16	Colliers Wood United	11	2	2	7	14	21	-7	8
17	Camberley Town	6	2	1	3	7	8	-1	7
18	Cove	8	2	1	5	15	18	-3	7
19	Alton Town	8	2	1	5	9	19	-10	7
20	Wembley	6	2	0	4	6	8	-2	6
21	Chessington & Hook Utd	7	2	0	5	9	14	-5	6
22	Horley Town	8	1	1	6	9	15	-6	4

Table dated: Saturday 21 September 2013

Latest results: Alton 2-1 Colliers Wood, Ash 0-1 Frimley Green,  
Hanworth 2-2 Badshot, Molesey 3-2 Horley, South Park 1-6 Cove

## Top Shots 2013-2014 Season

Photos by Gemma Jarman



Above: The Whyteleafe 'keeper leaps to block Mark Jarman's header.



Left: Karl Doughlin takes the ball forward against Whyteleafe.



Right Jamie Hatfield evades a Whyteleafe player.

View Lauren and Gemma Jarman's photos on the Club's website at: <http://www.epsomandewellfc.co.uk>

## CCL Premier Division Clubs – Fixtures

**Tuesday 24 September 2013**

### Combined Counties League – Premier Division

Alton Town	v.	Cove	19.45
EPSOM & EWELL	v.	Wembley	19.45
Farnham Town	v.	Raynes Park Vale	19.45
Frimley Green	v.	Horley Town	19.45
Molesey	v.	Mole Valley SCR	19.45
Windsor	v.	Hartley Wintney	19.45

### FA Carlsberg Vase – 2<sup>nd</sup> Qualifying Round Replay

Dorking Wanderers (SCL1)	v.	CHESSINGTON & HOOK UNITED	19.45
--------------------------	----	---------------------------	-------

**Saturday 24 September 2013**

### Combined Counties League – Premier Division

Badshot Lea	v.	South Park	15.00
Camberley Town	v.	Wembley	15.00
Chessington & Hook United	v.	Farnham Town	15.00
Croydon	v.	Westfield	15.00
Horley Town	v.	Ash United	15.00
Raynes Park Vale	v.	Alton Town	15.00
Windsor	v.	EPSOM & EWELL	15.00

### Cherry Red Records Premier Challenge Cup – 1<sup>st</sup> Round (2<sup>nd</sup> Round)

CB Hounslow United	v.	FRIMLEY GREEN	15.00
Banstead Athletic	v.	COLLIERS WOOD UNITED	15.00
Worcester Park	v.	MOLESEY	15.00
Eversley & California	v.	HANWORTH VILLA (2 <sup>nd</sup> Round)	15.00
Farleigh Rovers	v.	MOLE VALLEY SCR (2 <sup>nd</sup> Round)	15.00
BEDFONT SPORTS	v.	Sheerwater (2 <sup>nd</sup> Round)	15.00

**Tuesday 1 October 2013**

### Cherry Red Records Premier Challenge Cup – 2<sup>nd</sup> Round (1<sup>st</sup> Round)

CAMBERLEY TOWN	v.	FARNHAM TOWN	19.45
Sandhurst Town	v.	ASH UNITED	19.45
BADSHOT LEA	v.	Knaphill	19.45
WEMBLEY	v.	WESTFIELD	19.45
WINDSOR	v.	ALTON TOWN	19.45
SOUTH PARK	v.	Bedfont & Feltham	19.45
CHESSINGTON & HOOK UNITED	v.	HARTLEY WINTNEY	19.45

## Wembley FC History



Wembley Football Club was formed in 1946 following an amalgamation of various junior clubs, predominantly Sudbury Ratepayers Association and Sudbury Rangers. Nicknamed the 'Lions', (the symbol of the British Empire Exhibition held at Wembley in 1924/25, the emblem was also used by the local speedway and ice-hockey teams), they found a home at Vale Farm and have remained there ever since, developing a roped-off pitch into a respectable non-League football ground. Entry was immediately made into the Middlesex League. After finishing a creditable fourth in their first season they went on to win the championship in 1947/48. A further season was spent in this league before the Club progressed into the Spartan League in 1949/50. Here they stayed for two years, clinching the Western Division title in 1950/51 as a result of which they became founder members of the Delphian League.

In season 1955/56 they reached the finals of both the London Senior Cup and Middlesex Senior Cup and also finished runners-up in the Delphian League. In recognition of these achievements they were invited to join the Corinthian League and subsequently vastly improved the facilities at Vale Farm.

Following a quiet period the Club moved into the Athenian League (1963/64) which had absorbed both the Corinthian and Delphian Leagues to create three division. Wembley were placed in the middle division. Malcolm Allison (1962-1963) and Allen Batsford (1964 -1965) were both employed as coaches by the Lions during this period, although their respective spells were brief. Both gentlemen went on to have distinguished careers elsewhere and who knows where the Club might be today had either one of them remained at Vale Farm.

Wembley did manage to gain promotion to the Premier Division in 1967/68. To anticipate further progress floodlights were installed, a new clubhouse and dressing-room complex were built and eventually admission to the expanding Isthmian League was granted in 1975. Finished runners-up in their final season justified Wembley's elevation. Wembley began their first season in the Isthmian League (1975/76) in the second division (now the first division). The closest they came to promotion to the Premier Division was in 1985/86. After completing their fixtures, Wembley headed the table only to miss out on going up by two points when both St.Albans City and Bromley won their respective games in hand. Despite failing to achieve promotion, Wembley obtained some minor compensation by recording various cup successes during this period. In 1980/81 they reached the First Round Proper of the F.A. Cup for the one and only time, losing 0-3 to Enfield at Southbury Road.

## Wembley FC (Continued)

The Middlesex Charity Cup was won outright for the first time in 1982/83, while the Middlesex Senior Cup was also clinched for the first time a season later with a dramatic 5-1 success over Hendon. In 1986/87 Wembley won the coveted Middlesex Cup double with final wins over Hayes in the Senior Cup and Feltham in the Charity Cup, a feat nearly repeated during the following season.

Both finals were lost although the disappointment was tempered by beating Brentford at Griffin Park in the semi-final of the Middlesex Charity Cup, and having the final played at Wembley Stadium.

Several unprofitable years have followed and a fire at Vale Farm during the summer of 1992 almost ended Wembley's existence. Fortunately, thanks to some splendid off-the-field work, new facilities were quickly erected and the Club survived.

Wembley last won some silverware in 1994/95 with a 2-0 victory over Hampton in the final of the Middlesex Charity Cup. The Lions also went on to reach the second round proper of the F.A. Trophy in 1995/96 (their best run in the old F.A. Amateur Cup was also ended at the second round proper stage 1966/67 and 1968/69). However, their lengthy first division status was ended finish of that season when they suffered relegation into division two.

By claiming third place, a quick return to the first division was achieved a season later, but their division one tenure lasted just two seasons and they relegated again at the end of 1998/99. As a result of the restructuring of the Isthmian League's constitution, Wembley regained a berth in the first division (north) for the 2002/03 season. But they were unable to maintain their place and were demoted into the second division at the end of that campaign.

Wembley were forced to leave the Isthmian League set-up at the end of the 2005/06 season following the disbanding of the second division. They now compete in the Combined Counties League. A sterling effort was made to win promotion during their first season (2006/07)), but ran out of steam to end the term in the third place.

They have failed to make a real impact since, although they did reach the final of the Combined Counties League Cup in 2010/11, but lost to Sandhurst Town, 0-1, at Farnborough. However, following their participation the following season's F.A. Cup, (their Extra-Preliminary Round tie with Ascot United was covered live on Facebook) the competition sponsors, Budweiser, offered the Lions a much-publicised deal which they could not refuse.

Wembley wait to discover if their recently acquired motto 'a posse ad esse' (from possibility to reality) coined during the 1990s becomes true as a result of this association.

## First Eleven Appearances and Goals

Name	Debut	2013-2014				Career Totals			
		App	Sub	Total	Goals	App	Sub	Total	Goals
Nathan AYLING	15.11.2008	9	2	11	1	81	22	103	8
Robbie BURNS	14.08.2007	7	2	9	1	202	14	216	122
Kieran CAMPBELL	29.09.2012	13	0	13	0	15	0	15	0
Sam CURRIE	04.08.2012	12	0	12	0	61	2	63	1
Ali DEWAR	29.10.2011	2	0	2	1	34	19	53	5
Karl DOUGHLIN	03.08.2013	11	0	11	2	11	0	11	2
Carl DOWNS	17.09.2011	8	1	9	0	66	7	73	2
Russell HARTT	10.08.2013	1	1	2	0	1	1	2	0
Jamie HATFIELD	11.11.2006	11	0	11	0	217	11	228	6
Ben HAYWARD	07.03.2007	12	0	12	0	218	24	242	16
Jordayne HENRY	10.08.2013	2	1	3	0	2	1	3	0
Kyle HOUGH	14.08.2007	13	0	13	11	238	11	249	127
Reece JACKSON *	03.08.2013	4	2	6	2	4	2	6	2
Mark JARMAN	08.08.2009	3	3	6	1	100	42	142	53
Richard LEDIJU	13.08.2013	0	1	1	0	0	1	1	0
Dale MARVELL *	15.01.2000	0	1	1	0	250	40	290	80
Alex MCGREGOR	08.08.2009	7	3	10	2	125	20	145	18
Alex MCKAY	20.12.2008	9	1	10	3	50	16	66	5
George MURPHY	19.03.2013	7	1	8	0	16	2	18	0
Antony MYERS	23.12.2006	2	2	4	1	60	25	85	7
Anthony PANAYI	14.11.2010	8	1	9	1	105	10	115	3
Montell SHAW	N/A	0	0	0	0	0	0	0	0
Matt SMITH	08.08.2009	0	9	9	0	86	33	119	0
James TAYLOR	26.08.2013	2	1	3	0	2	1	3	0

Up to and including: **WHYTELEAFE** (FAV 2Q) (Saturday 21 September 2013) (13 games)

\* No longer at the club.

## This Season's Match Sponsors

Opponent	Date	Match Sponsor	Ball Sponsor
Westfield	06.08.2013	Epsom & Ewell FC Committee	
Whyteleafe (FA Cup)	21.08.2013	"Boys at the half-way line"	Peter Beddoe
Croydon	26.08.2013	Marvin Hough	
Bedfont Sports	07.09.2013	Steve and Geoff Dyke	
Chessington & Hook	14.09.2013		John Ward
Whyteleafe (FA Vase)	21.09.2013	Paul Merritt	
Wembley	24.09.2013		
Badshot Lea	05.10.2013		
Raynes Park Vale	15.10.2013		
Frimley Green	19.10.2013		
Chertsey Town (SSC)	23.10.2013		
Hartley Wintney	26.10.2013	The Jarman Family	
Mole Valley SCR	30.11.2013		
Windsor	21.12.2013	In Memory of Doug and Liz Burns	
Horley Town	28.12.2013		
Farnham Town	11.01.2014		
Alton Town	25.01.2014		
Cove	08.02.2014		
Molesey	01.03.2014	John Herbert	
Colliers Wood United	08.03.2014	Joe Hagan P.G.A. Golf Professional 01932 267666	
Ash United	22.03.2014		
Camberley Town	05.04.2014		
South Park	19.04.2014		
Hanworth Villa	26.04.2014		

If you like to sponsor a match or the match ball this season, please contact a Committee Member for details. Cost £40 (match) includes two free tickets and two matchday programmes, £25 (match ball) includes one free ticket and one matchday programme.

**Epsom & Ewell Football Club**  
**would like to thank all the above sponsors for their support!**

## FA Carlsberg Vase Match Report

### Epsom & Ewell 2-3 Whyteleafe

FA Carlsberg Vase 2<sup>nd</sup> Qualifying Round – Saturday 21 September 2013

After the 6-1 defeat in the FA Cup replay a month ago, Epsom & Ewell equipped themselves much better against Whyteleafe in this FA Vase tie and took the game to their opponents, determined not to be outplayed by them on this occasion.

In the first few minutes, Jamie Hatfield sent over a couple of dangerous left wing crosses which evaded everyone, before Epsom took the lead in the 10th minute. A defensive long ball by Epsom's 'keeper Kieran Campbell bypassed all the 'Leafe defenders and Kyle Hough took control of the ball, waltzed around their 'keeper and drove the ball home from a very tight angle on the left of the penalty area. From then on, the match really opened up with both sides creating some promising attacking moves and with Roscoe D'Sane for the 'Leafe making some strong runs, shooting on sight and forcing Kieran Campbell into some fine saves.

The Salts had some dangerous looking raids on the 'Leafe goal as Karl Doughlin fired just wide on 30 minutes, and Kyle Hough netted the ball on 38 minutes but had already been ruled offside. However, he did get round the 'keeper in the 40th minute only to see his goal-bound shot cleared off the line.

**Half-Time:** Epsom & Ewell 1-0 Whyteleafe

On 68 minutes, Mark Jarman, who was making his 100<sup>th</sup> starting appearance for Epsom (142 in total) took the ball past the 'keeper, only for the 'keeper to upend him, the ball went out of play and, to everyone's astonishment, the referee gave a goal kick instead of a penalty.

Epsom had some great opportunities but with 20 minutes to go, the 'Leafe earned a corner and Kieran Campbell appeared to make a great save but he was unable to keep hold of the ball and Taylor Smith followed up to bundle the ball home for the equaliser.

**Full-Time:** Epsom & Ewell 1-1 Whyteleafe

In the early stages of Extra-Time, Kieran Campbell pulled off some more fine saves before, in the 96th minute, he was adjudged to have tripped an on-running 'Leafe forward. Jason Thompson despatched the penalty home for a 2-1 lead for the visitors.

**Extra-Time Half-Time:** Epsom & Ewell 1-2 Whyteleafe

Following an Epsom corner that was headed over on 106 minutes, Epsom failed to clear in their penalty area and John Fowler slammed the ball home on 110 minutes to increase 'Leafe's lead to 3-1. With one minute left on the clock, Kyle Hough duplicated his earlier goal when he latched on to another through ball, rounded the 'keeper and from another narrow angle, sent a left footed drive home to set up a grandstand finish.

In the last minute, Hough delivered a dangerous cross shot that looked like it was heading for the top corner only for the 'keeper to pull off a great fingertip save to deny the Salts an equaliser and the lottery of a penalty shoot out.

**Full-Time after Extra-Time:** Epsom & Ewell 2-3 Whyteleafe

Match Report by George Holland

# CCL Premier Division – Results

Saturday 21 September 2013

## Combined Counties League – Premier Division

Alton Town	2-1	Colliers Wood United	
Ash United	0-1	Frimley Green	
Hanworth Villa	2-2	Badshot Lea	
Molesey	3-2	Horley Town	
South Park	1-6	Cove	

## FA Carlsberg Vase – 2<sup>st</sup> Qualifying Round (AET) After extra time

Ashford United (SCEL)	4-1	COBHAM (CCL1)	
BANSTEAD ATHLETIC (CCL1)	0-2	Phoenix Sports (SCEL)	
Bracknell Town (HELP)	1-2	HARTLEY WINTNEY	
CHESSINGTON & HOOK UNITED	4-4	Dorking Wanderers (SCL1) (AET)	
Chinnor (HEL1E)	2-3	BEDFONT & FELTHAM (CCL1)	
CROYDON	1-3	Cray Valley (PM) (SCEL)	
EPSOM & EWELL	2-3	Whyteleafe (AET)	
FARNHAM TOWN	4-1	Slimbridge (WLP)	
Glebe (KIL)	2-3	DORKING (CCL1)	
KNAPHILL (CCL1)	5-1	Tadley Calleva (WXL1)	
Milton United (HEL1E)	1-0	BEDFONT SPORTS	
New College Swindon (HEL1W)	0-2	STAINES LAMMAS (CCL1)	
WEMBLEY	2-1	Hatfield Town (SSMLP)	
WESTFIELD	3-0	Thame United (HELP)	
WINDSOR	3-0	CAMBERLEY TOWN	

Sunday 22 September 2013

## FA Carlsberg Vase – 2<sup>st</sup> Qualifying Round (AET) After extra time

Fisher (SCEL)	0-6	AFC CROYDON ATHLETIC (CCL1)	
MOLE VALLEY SCR	4-6	Greenwich Borough (SCEL)	
Woodstock Sports (SCEL)	0-2	EPSOM ATHLETIC (CCL1)	

# Player Sponsorship (Cont.)



**Ben Hayward**

Awaiting sponsor



**Karl Doughlin**

Awaiting sponsor



**Alex McGregor**

Joe Hagen PGA Golf  
01932 267666



**Jordayne Henry**

Awaiting sponsor



**Kyle Hough**

Awaiting sponsor



**Matt Smith**

Awaiting sponsor



**Carl Downs**

Awaiting sponsor



**George Murphy**

Awaiting sponsor



**Ali Dewar**

ID & JD Services Limited



**Antony Myers**

Awaiting sponsor



**Mark Jarman**

Ann Summers Limited



**Robbie Burns**

Charles Bowry MM

If you would like to sponsor a player this season, please speak to a member of the Committee. Cost per player £40 for the season.



## Player Sponsorship



**Lyndon Buckwell**  
(Manager)

Awaiting Sponsor



**Glynn Mandeville**  
(Assistant Manager)

Awaiting sponsor



**Ken Jones**  
(Physio)

Awaiting sponsor



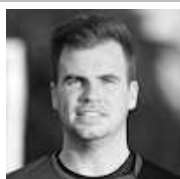
**Jamie Hatfield**  
(Captain)

Peter Lumm



**Sam Currie**

Awaiting Sponsor



**Alex McKay**

Awaiting Sponsor



**Tony Coombe**  
(Assistant Manager)

Awaiting sponsor



**Russell Banyard**  
(Player-Coach)

Awaiting sponsor



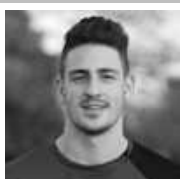
**Jamie McConnell**  
(Kit man)

Awaiting sponsor



**Kieran Campbell**  
(Goalkeeper)

Awaiting sponsor



**Anthony Panayi**

Douglas Burns and  
Paul Marshall



**Nathan Ayling**

Awaiting sponsor

If you would like to sponsor a player this season, please speak to a member of the Committee. Cost per player £40 per season.

## EEFC Player in focus – Kyle Hough

Photos by Gemma Jarman

Right: Kyle Hough gets past the Whyteleafe 'keeper on the way to scoring the first of his two goals in the FA Vase Second Round Qualifying.



Gemma Jarman © 2013



Left: Kyle Hough leaves behind a Cove defender.

Below: Kyle Hough gets through two Whyteleafe defenders.



Gemma Jarman © 2013

**Position:**  
Striker

**Appearances:**  
This season= 13  
Total = 249

**Goals:**  
This season = 11  
Total = 127

# Fixtures, Results and Line-ups 2013-2014

**Key:** CCL – Combined Counties League Premier Division, CCL PCC – Combined Counties League Premier Challenge Cup, FAC – FA Challenge Cup, FAV – FA Challenge Vase, SSC – Surrey Senior Cup  
**SSC – Southern Combination Cup** Number in brackets after name denotes player who was substituted. Epsom & Ewell score noted first.

No	DATE	DAY	COMP	H/A	OPPONENTS	F/T	90m	H/T	SCORERS	1	2	3	4	5	6	7	8	9	10	11	SUB 1	SUB 2	SUB 3	ATT
1	03.08.2013	Sat	CCLP	A	Alton Town	1-0		0-0	Panayi	Campbell	Currie	Hatfield	Panayi	McKay	Ayling	Hayward	Doughlin	Jackson	Hough	McGregor	Smith (2)	Marvell (11)		97
2	06.08.2013	Tue	CCLP	H	WESTFIELD	2-1		1-0	McKay (2)	Campbell	Currie	Hatfield	Panayi	McKay	Ayling	Hayward	Doughlin	Jackson	Hough	McGregor	Smith (8)	Burns (9)		71
3	10.08.2013	Sat	CCLP	A	Mole Valley SCR	3-0		2-0	McGregor, Hough 2 (1 pen)	Campbell	Currie	Hatfield	Panayi	Hartt	Ayling	Hayward	Downs	Burns	Hough	McGregor	Myers (11)	Henry (10)	Murphy (4)	43
4	13.08.2013	Tue	CCLP	A	Camberley Town	2-0		0-0	Dewar, Hough	Campbell	Currie	Hatfield	Panayi	McKay	Ayling	Hayward	Downs	Burns	Hough	Dewar	Lediju (11)			91
5	17.08.2013	Sat	FAC EP	A	Whyteleafe	3-3		3-1	Myers, Hough, Jackson	Campbell	Currie	Hatfield	Panayi	Murphy	Doughlin	Hayward	Downs	Burns	Hough	Myers	Jackson (7)	Smith (11)		118
6	21.08.2013	Wed	FAC EPR	H	WHYTELEAFE	1-6		0-3	Hough (pen)	Campbell	Currie	Hatfield	Panayi	Murphy	Doughlin	Dewar	Downs	Burns	Hough	Myers	Jarman (7)	McGregor (11)	Ayling (8)	93
7	24.08.2013	Sat	CCLP	A	Cove	3-0		1-0	McGregor, Ayling, Hough	Campbell	Currie	Hatfield	McKay	Murphy	Ayling	Hayward	Doughlin	Jackson	Hough	McGregor	Smith (2)	Downs (6)	Hartt (8)	48
8	26.08.2013	Mon	CCLP	H	CROYDON	2-0		1-0	Doughlin, Jackson	Campbell	Currie	Hatfield	McKay	Murphy	Downs	Hayward	Doughlin	Jackson	Hough	McGregor	Taylor (5)	Smith (9)	Burns (11)	57
9	31.08.2013	Sat	CCLP	A	Ash United	3-2		2-2	Hough (2), Burns	Campbell	Currie	Hatfield	McKay	Murphy	Downs	Hayward	Doughlin	Burns	Hough	McGregor	Jarman (11)	Ayling (7)		76
10	07.09.2013	Sat	CCLP	H	BEDFONT SPORTS	1-0		0-0	McKay	Campbell	Taylor	Hatfield	McKay	Murphy	Downs	Hayward	Doughlin	Burns	Hough	Ayling	Panayi (5)	Jarman (6)	Smith (7)	63
11	10.09.2013	Tue	CCL PCC1	A	Horley Town	3-2		1-1	Doughlin, Hough, Jarman	Campbell	Currie	Henry	Panayi	McKay	Ayling	Hayward	Doughlin	Burns	Hough	Jarman	McGregor (7)	Smith (6)		35
12	14.09.2013	Sat	CCLP	H	CHESSINGTON & HOOK UNITED	0-1		0-1	N/A	Campbell	Currie	Henry	Panayi	McKay	Ayling	Hayward	Doughlin	McGregor	Hough	Jarman	Jackson (8)	Myers (3)	Smith (9)	47
13	21.09.2013	Sat	FAV 2Q	H	WHYTELEAFE	2-3	1-1	1-0	Hough (2)	Campbell	Currie	Hatfield	Taylor	Murphy	Downs	Hayward	Doughlin	Jarman	Hough	Ayling	McGregor (9)	McKay (11)	Smith (7)	66
14	24.09.2013	Tue	CCLP	H	WEMBLEY (1945)																			
15	28.09.2013	Sat	CCLP	A	Windsor																			
16	05.10.2013	Sat	CCLP	H	BADSHOT LEA																			
17	09.10.2013	Wed	CCL PCC2	A	AFC Croydon Athletic (1945)																			
18	12.10.2013	Sat	CCLP	A	Farnham Town																			
19	15.10.2013	Tue	CCLP	H	RAYNES PARK VALE (1945)																			
20	19.10.2013	Sat	CCLP	H	FRIMLEY GREEN																			
21	23.10.2013	Wed	SSC 1	H	CHERTSEY TOWN (Provisional date)																			
22	26.10.2013	Sat	CCLP	H	HARTLEY WINTNEY																			
23	02.11.2013	Sat	CCLP	A	Hanworth Villa																			
24	09.11.2013	Sat	CCLP	A	Raynes Park Vale																			
25	23.11.2013	Sat	CCLP	A	Molesey																			
26	30.11.2013	Sat	CCLP	H	MOLE VALLEY SCR																			
27	07.12.2013	Sat	CCLP	A	Colliers Wood United																			
28	14.12.2013	Sat	CCLP	A	Wembley																			
29	21.12.2013	Sat	CCLP	H	WINDSOR																			
30	28.12.2013	Sat	CCLP	H	HORLEY TOWN																			
31	04.01.2014	Sat	CCLP	A	South Park																			
32	11.01.2014	Sat	CCLP	H	FARNHAM TOWN																			
33	18.01.2014	Sat	CCLP	A	Westfield																			
34	25.01.2014	Sat	CCLP	H	ALTON TOWN																			
35	01.02.2014	Sat	CCLP	A	Frimley Green																			
36	08.02.2014	Sat	CCLP	H	COVE																			
37	15.02.2014	Sat	CCLP	A	Hartley Wintney																			
38	22.02.2014	Sat	CCLP	A	Badshot Lea																			
39	01.03.2014	Sat	CCLP	H	MOLESEY																			
40	08.03.2014	Sat	CCLP	H	COLLIERS WOOD UNITED																			
41	15.03.2014	Sat	CCLP	A	Horley Town																			
42	22.03.2014	Sat	CCLP	H	ASH UNITED																			
43	29.03.2014	Sat	CCLP	A	Bedfont Sports																			
44	05.04.2014	Sat	CCLP	H	CAMBERLEY TOWN																			
45	12.04.2014	Sat	CCLP	A	Chessington & Hook United																			
46	19.04.2014	Sat	CCLP	H	SOUTH PARK																			
47	21.04.2014	Mon	CCLP	A	Croydon (1130)																			
48	26.04.2014	Sat	CCLP	H	HANWORTH VILLA																			
49	TBA	TBA	SSC 1	H	CHIPSTEAD																			
50																								
51																								
52																								
53																								